

Pueblo Condominiums

2 BEDROOM

\$123,500



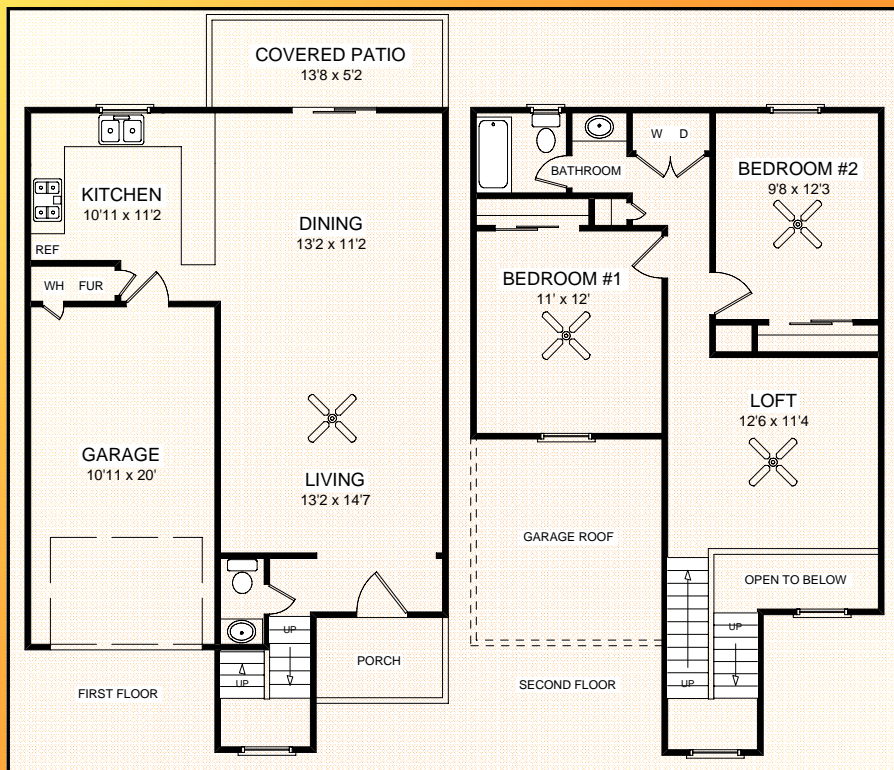
Welcome Home!

Two story colonial Mexican style condo features 1,225 square feet of living space with 2 bedrooms, 1½ baths plus a loft. Ceramic tile at entry, kitchen, baths, dining and laundry area with carpet flooring in bedrooms and living area. Balconies have wrought iron guardrails. The home is prewired for an alarm system on all windows and doors

Other features include:

- ◆ One car garage
- ◆ Covered patio
- ◆ Refrigerated air
- ◆ Cultured marble vanity tops
- ◆ Association fee \$80.00

Call me for a tour!



YSLETA I.S.D.

- ◆ REL WASHINGTON E.S.
- ◆ EASTWOOD MIDDLE
- ◆ EASTWOOD H.S.

Century 21
The Edge

Jennifer Stroh
(915) 588-2338

www.ahome4u2day.com



Flyer designed by:
Aconrad@elp.rr.com
(915) 549-3884



Each Office is Independently Owned and Operated. CENTURY 21® is a registered trademark of Century 21 Real Estate Corporation. Information deemed reliable, but should be verified.



Pueblo Condominiums

3150 YARBROUGH DRIVE EL PASO, TEXAS 79935



PLEASE NOTE: The enclosed materials are reproduced from artists renderings. All measurements shown are approximate. Location, size, and existence of doors, windows, walls, and any other items depicted may vary. Prices, benefits and locations are subject to change without notice.