

# Pueblo Condominiums

**3 BEDROOM**

**\$139,000**



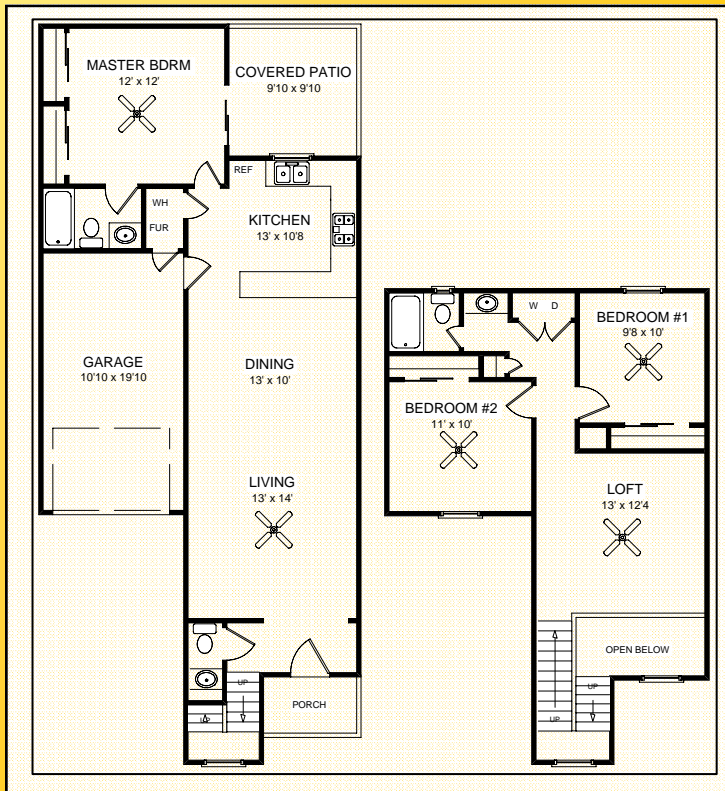
Welcome Home!

Two story colonial Mexican style condo featuring 1,399 square feet of living space. Master bedroom on first floor and 2 bedrooms plus loft upstairs. 2½ baths with cultured marble vanity tops. Ceramic tile at entry, kitchen, baths, dining and laundry area. Carpet flooring in living area and bedrooms. Balconies with wrought iron guardrails. Prewired for an alarm system on all windows and doors.

Other features include:

- ◆ One car garage
- ◆ Covered patio
- ◆ Refrigerated air
- ◆ Association Fee \$80.00

Call me for a tour!



YSLETA I.S.D.

- ◆ REL WASHINGTON E.S.
- ◆ EASTWOOD MIDDLE
- ◆ EASTWOOD H.S.

**Century 21**  
**The Edge**

Jennifer Stroh  
(915) 588-2338



[www.ahome4u2day.com](http://www.ahome4u2day.com)

Flyer designed by:  
Aconrad@elp.rr.com



Each Office is Independently Owned and Operated. CENTURY 21® is a registered trademark of Century 21 Real Estate Corporation. Information deemed reliable, but should be verified.

# Pueblo Condominiums

3150 YARBROUGH DRIVE EL PASO, TEXAS 79935



PLEASE NOTE: The enclosed materials are reproduced from artists renderings. All measurements shown are approximate. Location, size, and existence of doors, windows, walls, and any other items depicted may vary. Prices, plans, benefits and locations are subject to change without notice.